



# HAYMAC APEX ROOF TIMBER BUILDING INSTALLATION INSTRUCTIONS

- 1.0- If you have purchased one of our timber frame bases with 18mm polyurethane ground clearance packers installed please lay your base down on to your patio or concrete slab and then move to item 2.



- 2.0- Lay out the timber building floor- check for level.



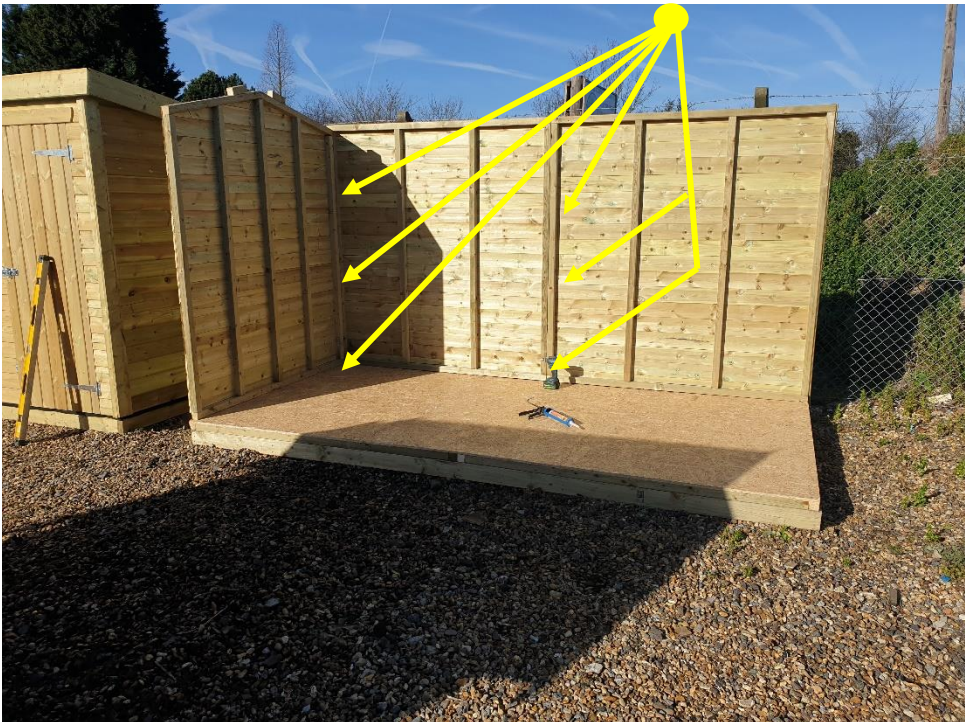


# HAYMAC APEX ROOF TIMBER BUILDING INSTALLATION INSTRUCTIONS

3.0- Install the side wall or walls- ensure the wall fits on the end of the timber building base.



4.0- Fit the gable end panel and any additional side panels required-use the GP200 clear mastic on each joint, fix using 3x 5x 70m screws- top middle and bottom of the panel joints.



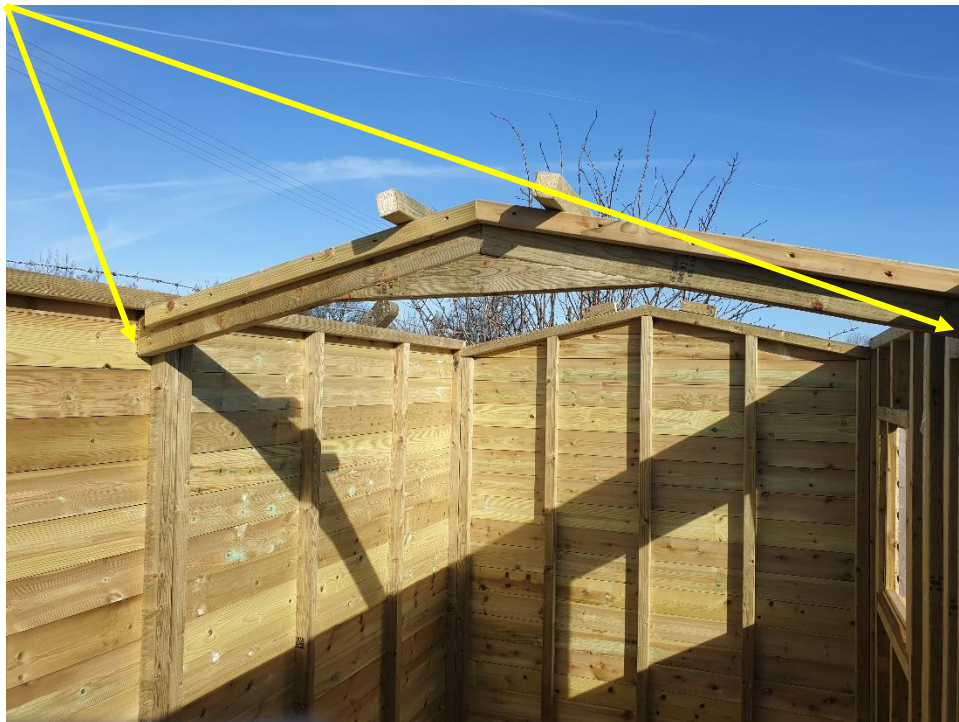


## HAYMAC APEX ROOF TIMBER BUILDING INSTALLATION INSTRUCTIONS

5.0- Fit the other side walls and gable end fix together as above.



6.0- Install the roof truss if provided. The position of the roof truss will be marked on the side wall upright timber. Fix into position using 3x 5x70mm screws at each end.





## HAYMAC APEX ROOF TIMBER BUILDING INSTALLATION INSTRUCTIONS

7.0- Install the roof deck boards and fix down from below using 5x70mm screws- note- fix through the top plate into the roof purlins.



8.0- Ensure the walls are square to the floor and fix down using 5x70mm screws- use 1x fixing to each upright timber spacing.





# HAYMAC APEX ROOF TIMBER BUILDING INSTALLATION INSTRUCTIONS

9.0-Install the roofing felt- always lay the roofing felt out long ways.

## Materials Required:

Shed Felt  
13mm Clout Head Nails  
Gripbond Pro silicone sealant

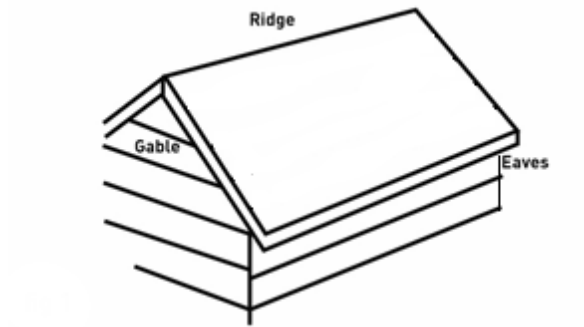
## Tools Needed:

Tape Measure, Sharp Knife, Gloves, An Old Rag or Cloth  
Straight Edge, Hammer, Caulking gun

## Before you begin:

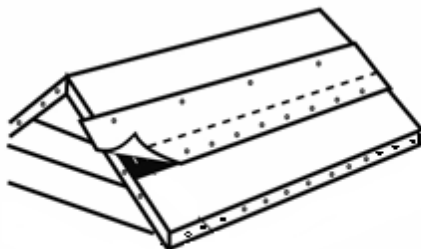
- Clean and tidy up the area (especially the floor) around the outside of the shed. This will enable you to move about with ease.
- Unroll your shed felt onto a clean and dry surface. This allows it to relax after being rolled up.
- All roofing felt is harder to work at low temperature. It's best to avoid working with it below 10° or in wet or windy conditions.
- Prepare the surface of the shed roof, ensure the surface is flat, clean and dry.

## Step 1: Measure your shed:



We will normally provide you with the correct length of felt for your building. If we have provided a full felt roll please follow the instructions. Run a tape measure along the bottom of the roof (the eaves), and up the diagonal end (the gable). Write down these measurements (it's easiest to use metric as shed felt normally comes in 8m or 10m rolls). Remember too that you will need the felt to overhang each gable end, and the eaves of the shed by at least 100mm (so you need to add this to your measurements).

## Step 2: Calculate how many lengths of roof felt are needed:



The felt will be applied in strips, with each strip overlapping the previous one by at least 75mm (see image). A final length sheet will be required along the ridge. Calculate how many strips and of what length you will need.

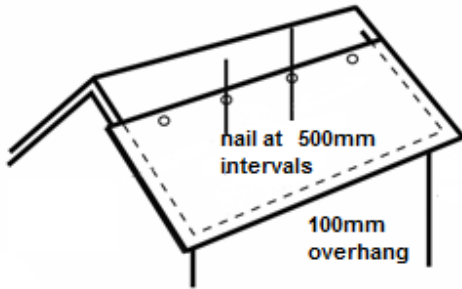


# HAYMAC APEX ROOF TIMBER BUILDING INSTALLATION INSTRUCTIONS

## Step 3: Cut your roof felt to length:

Using your straight edge and sharp knife, carefully cut your felt to the correct length (don't forget to include the extra 100mm overhang at each end!)

## Step 4: Nail on the first length:



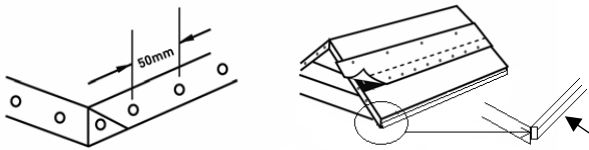
Position the first length of roof felt along the lowest part of the shed roof. Ensure that it overhangs the eaves and each gable end of the roof by 100mm.

Nail along the top edge of the strip with the galvanised clout nails. Space the nails at 500mm centres.

Position the first length of roof felt along the lowest part of the shed roof. Ensure that it overhangs the eaves and each gable end of the roof by 100mm.

Nail along the top edge of the strip with the galvanised clout nails. Space the nails at 500mm centres.

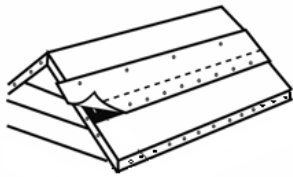
## Step 5: Fold over the gables and eaves:



Starting at the centre of the eave, fold the overhanging felt over the edge of the roof. Fix the overhanging felt using galvanised nails at 50mm spacings along the side of the roof and at the purlin ends on the gable end of the roof.

Proshop drip batten- roofing felt is nailed to the drip batten- see photo below.

## Step 6: Fix the next length of shed felt:



Hobbyshop felt overlaps edge of roof & the Proshop felt is tacked to the side roof drip batten

Take your second length of felt. Position this strip so that it overhangs the top of the first sheet by 75mm. Nail along the top of this strip at 500mm.

Where the sheets overlap, apply a bead of Gripbond Pro silicone sealant. Using a downwards brushing motion, firmly press the top layer of roofing felt onto the sealant, taking care to ensure that the strip of felt does not ripple or crease. Nail in place at 50mm spacings along the bottom of the strip. Use an old cloth or rag to remove any excess silicone sealant.

Continue to work up the complete side of the roof in the same method.

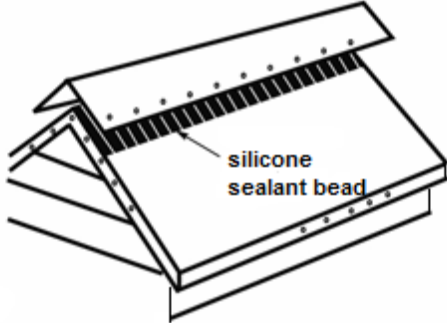


# HAYMAC APEX ROOF TIMBER BUILDING INSTALLATION INSTRUCTIONS

## Step 7: Felt the second side of your shed:

Repeat the same process for the opposite side of the roof.

## Step 8: Fix the capping sheet:



The roof should be finished with a capping sheet along the ridge. Place along the ridge of the shed so that it equally overhangs each side of the roof. Always ensure that it overlays the top strips of felt by at least 75mm. Apply a Gripbond Pro silicone sealant bead to the underside of both sides of the ridge and press the capping sheet into place. Nail along the bottom of each side of the capping sheet at 50mm intervals.

Fix the timber side strips (Hobbyshop only) and barge boards to the side of the roof panels and fit the Apex barge board joint cover diamond using the galvanised nails provided.

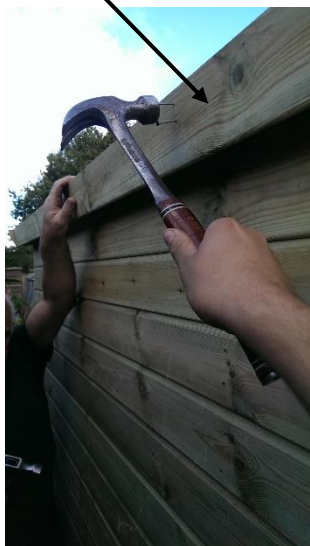
Hobbyshop roofing felt is nailed to the edge of the roof and covered by the timber side strips and barge boards



Proshop drip batten- roofing felt is nailed to the drip batten. The Proshop does not have side timber strips.



Hobbyshop timber side strips



Hobbyshop & Proshop timber barge boards & gable end diamond cover joint cover





## HAYMAC APEX ROOF TIMBER BUILDING INSTALLATION INSTRUCTIONS

10.- Install the window glass and glazing internal beads.

- Run a bead of G200 silicone sealant around the window frame timbers.
- Fit the glass- press the glass firmly so it makes a good seal to the shiplap cladding.
- Install the internal window beads using the nails provided.
- Seal the outside of the window to the timber cladding and window cill using the GP200 sealant- smooth out using a wet finger.







## HAYMAC APEX ROOF TIMBER BUILDING INSTALLATION INSTRUCTIONS

11.- Install the corner weather fillets and panel joint weather fillets

- Use a thin bead of GP200 silicone sealant to both side of all joints.
- Fix using the galvanised nails provided.



12.- You will have now completed the installation of your new timber building. It is quite common that you will need to re-adjust the door hinges and locking slide bolt to allow correct operation of the door. All you need to do is re-align the hinges and slide bolt fixings.

13.- Please remember to adequately paint and waterproof your new timber building- you can download our Timber Building Painting and Weatherproofing information sheet from our website @ [www.HAYMAC-goodwithwood.co.uk](http://www.HAYMAC-goodwithwood.co.uk).